

Document #: **STPM-100**
Revised: 08/19/24 WLH



Table of Contents

Smart Tarp Parts

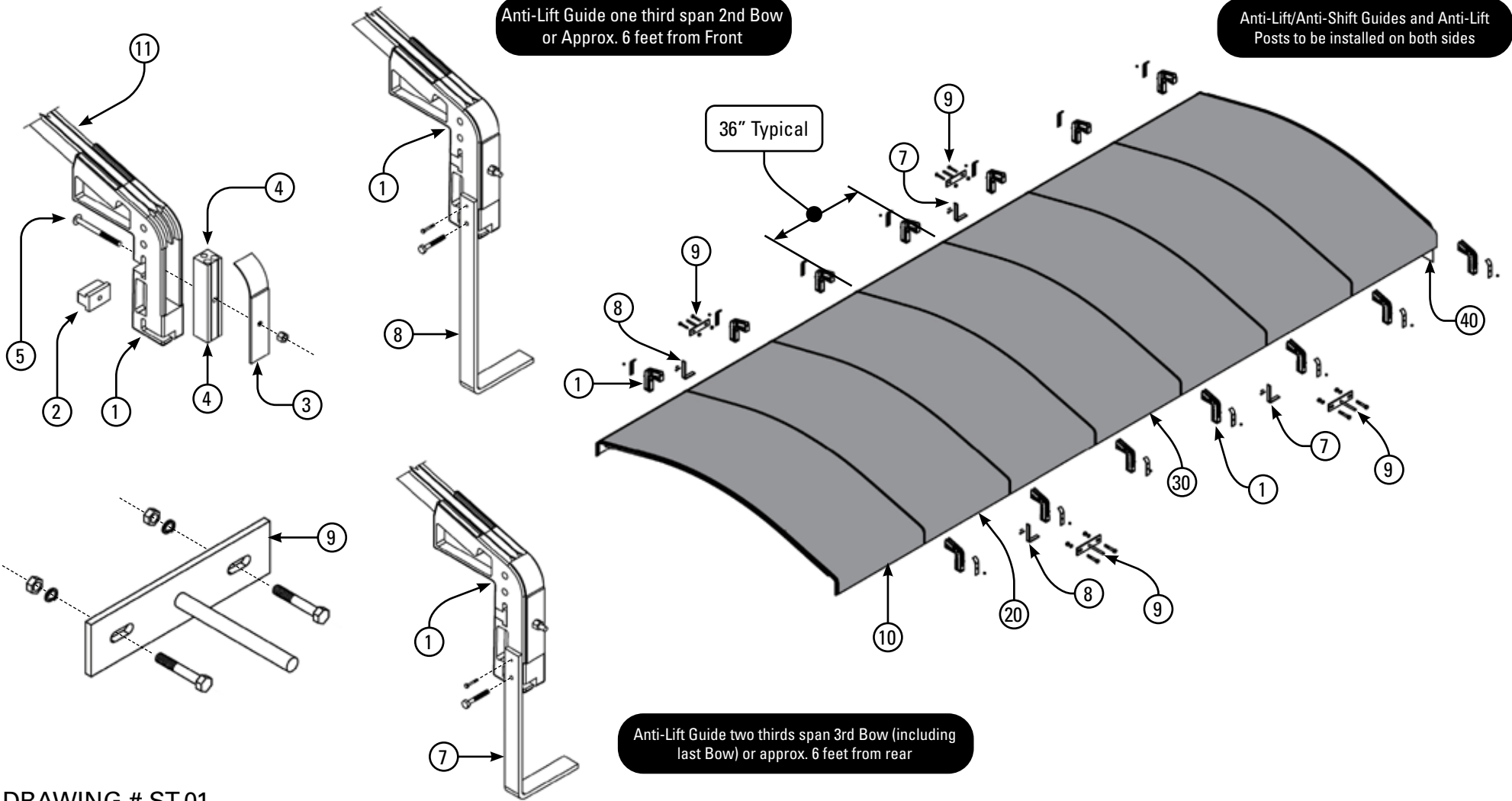
Vinyl Panels, Bow and Bow Ends	1-2
Front Shaft Arrangement Direct Drive System.....	3-4
Idler Pulley Assembly Standard Rear Bracket.....	5-6
Idler Pulley Assembly Extended Rear Bracket.....	7-8



Vinyl Panels, Bow, and Bow Ends

Anti-Lift Guide one third span 2nd Bow or Approx. 6 feet from Front

Anti-Lift/Anti-Shift Guides and Anti-Lift Posts to be installed on both sides



Anti-Lift Guide two thirds span 3rd Bow (including last Bow) or approx. 6 feet from rear

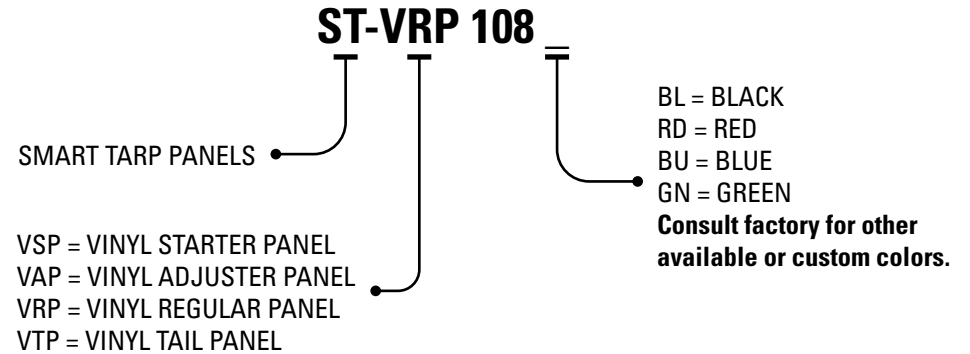
DRAWING # ST-01



Vinyl Panels, Bow, and Bow Ends

BOW & BOW END

MK	PART #	# REQ.	BILL OF MATERIAL DESCRIPTION
---	ST-AB100		BOW END ASSY. (INCLUDES BOW END, T, & CAP INSERT)
1	ST-AB101		BOW END
---	ST-AB101WRL		WIRE ROPE LUBE
2	ST-AB102		BOW END "T"
3	ST-AB103		BOW END CAP
4	ST-AB104		ALUMINUM INSERT FOR BOW END
5	ST-AB105		NUT AND BOLT FOR CAP
7	ST-AB106S		ANTI-LIFT GUIDE - SHORT (REAR)
8	ST-AB106L		ANTI-LIFT GUIDE - LONG (REAR)
9	PT-AB106S		ANTI-LIFT/ANTI - SHIFT - SHORT (FRONT/MIDDLE)
11	PT-AB108		SMART TARPS BOW



PANEL NOMENCLATURE

All panel widths 36" unless otherwise noted. Panel width must be confirmed when ordering. Panel color must be provided when ordering. Consult factory for custom rear skirt option.

VINYL STARTER

MK	PART #	# REQ.	BILL OF MATERIAL DESCRIPTION
10	ST-VSP108		36" X 112" X 6" RISE BOW

VINYL ADJUSTER PANEL

MK	PART #	# REQ.	BILL OF MATERIAL DESCRIPTION
20	ST-VAP108		36" X 112" X 6" RISE BOW

VINYL REGULAR PANEL

MK	PART #	# REQ.	BILL OF MATERIAL DESCRIPTION
30	ST-VRP108		36" X 112" X 6" RISE BOW

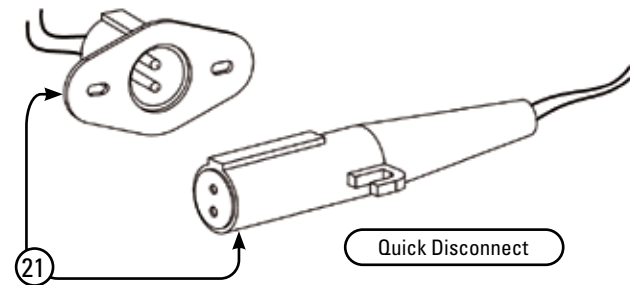
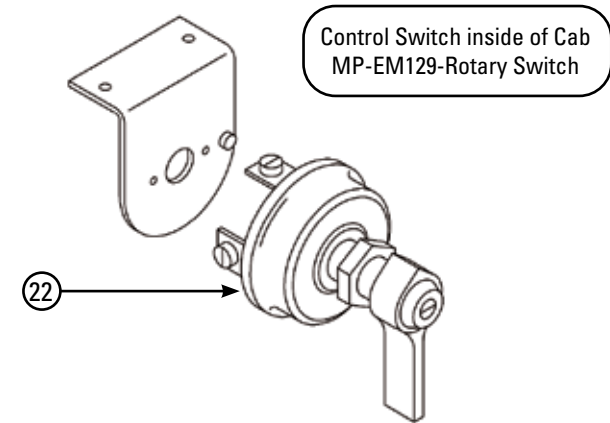
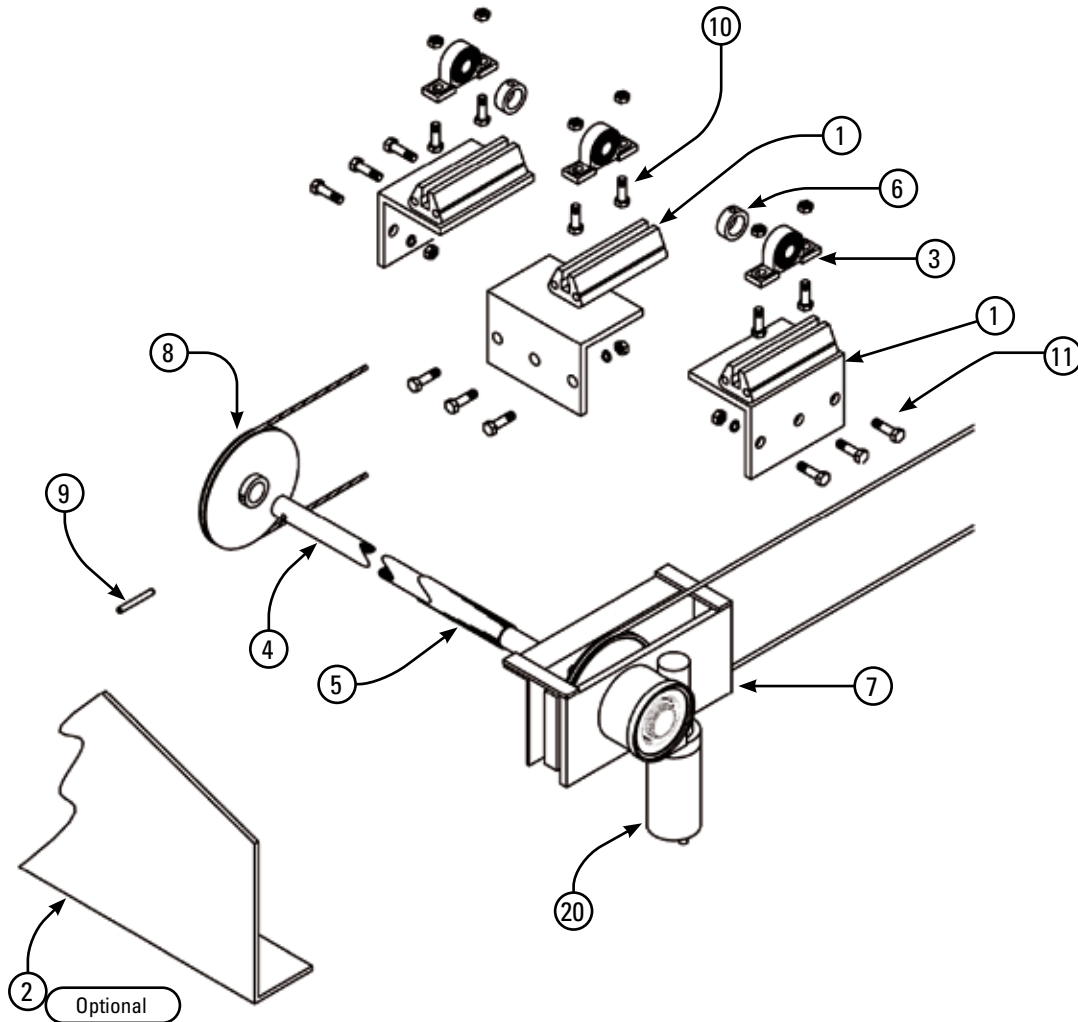
VINYL TAIL PANEL

MK	PART #	# REQ.	BILL OF MATERIAL DESCRIPTION
40	ST-VTP108		11" X 112" X 6" RISE BOW

REV. 07/26/24 WLH



Front Shaft Arrangement Direct Drive System



DRAWING # ST-02



Front Shaft Arrangement Direct Drive System

FRONT SHAFT AND ACCESSORIES

MK	PART #	# REQ.	BILL OF MATERIAL / DESCRIPTION	LENGTH	
				FT.	IN.
1	ST-FSA201	3	ALUMINUM SHAFT SUPPORT BRACKET		
1A	ST-FSA201A	2	ALUMINUM RAIL		5 ½
1B	ST-FSA201B	1	MOUNTING PLATE		
2	ST-FSA202	1	DEFLECTOR PLATE		
3	ST-FSA103	3	PILLOW BLOCK BEARING		
4	ST-FSA104	1	FRONT SHAFT		
5	ST-FSA105	2	SHAFT COVER		
6	ST-FSA106	2	LOCK COLLARS		
7	ST-FSA112	1	MOUNT BRACKET		
8	ST-FSA101	2	4" CABLE PULLEY		
9	ST-FSA109	2	5/16" BOLT		
10	ST-FSA110	6	BOLT, NUT, WASHER ASSEMBLY		
11	ST-FSA111	9	BOLT, NUT, WASHER ASSEMBLY		

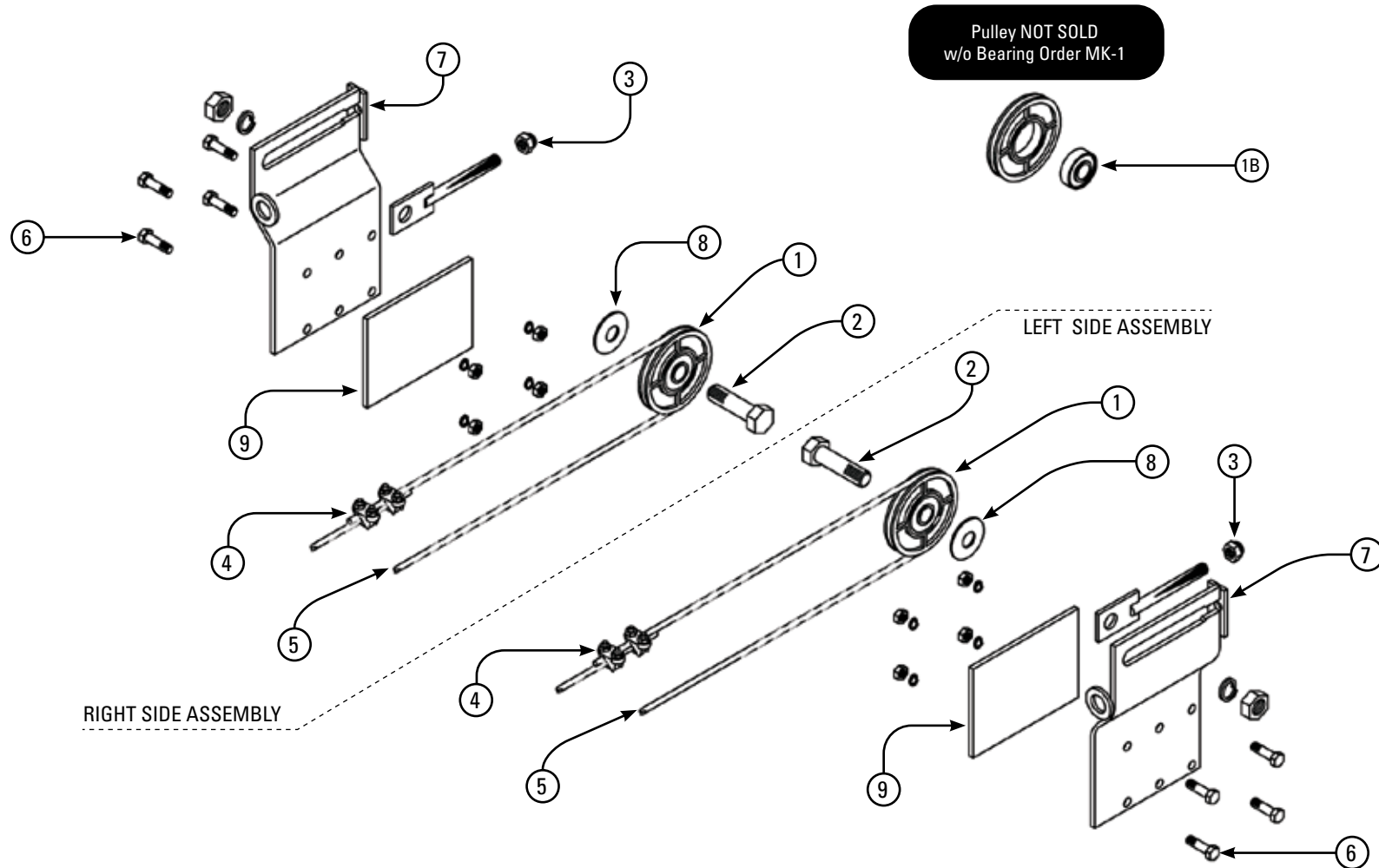
ELECTRIC MOTOR DRIVE

MK	PART #	# REQ.	BILL OF MATERIAL / DESCRIPTION	LENGTH	
				FT.	IN.
20	MP-EM119	1	ELECTRIC MOTOR		
21	MP-EM127	1	QUICK DISCONNECT		
22	MP-EM129	1	ROTARY SWITCH		

PARTS NOT SHOWN:
 MP-EM124 - BATTERY CONNECTOR
 MP-EM125 - 50 AMP BREAKER
 MP-EM126 - MOTOR CONNECTOR
 MP-EM128 - WIRE / PER FOOT



Idler Pulley Assembly Standard Rear Bracket



DRAWING # ST-03



Idler Pulley Assembly Standard Rear Bracket

RIGHT REAR PULLEY ASSEMBLY

MK	PART #	# REQ.		BILL OF MATERIAL / DESCRIPTION	LENGTH	
					FT.	IN.
---	ST-RPA100R	1		R.H. PULLEY ASSEMBLY - COMPLETE		
1	ST-RPA101	1		PULLEY WITH BEARING		
1A	ST-RPA101A		1	PULLEY - NO BEARING		
1B	ST-RPA101B		1	BEARING		
2	ST-RPA102	1		REAR PULLEY BOLT, WASHER, NUT		
3	ST-RPA103	1		SPANNER W/ LOCK NUT		
4	STS-RPA104	2		CABLE CLAMPS		
5	ST-RPA105G			GALVANIZED CABLE 1/4"		
5	ST-RPA105S			STAINLESS CABLE 1/4"		
6	ST-RPA106	3		BOLT, WASHER, NUT, ASSEMBLY		
7	ST-RPA107	1		RIGHT REAR BRACKET		
8	ST-RPA109	1		WASHER SPACER		
9	---	1		1/2" SPACER PLATE		

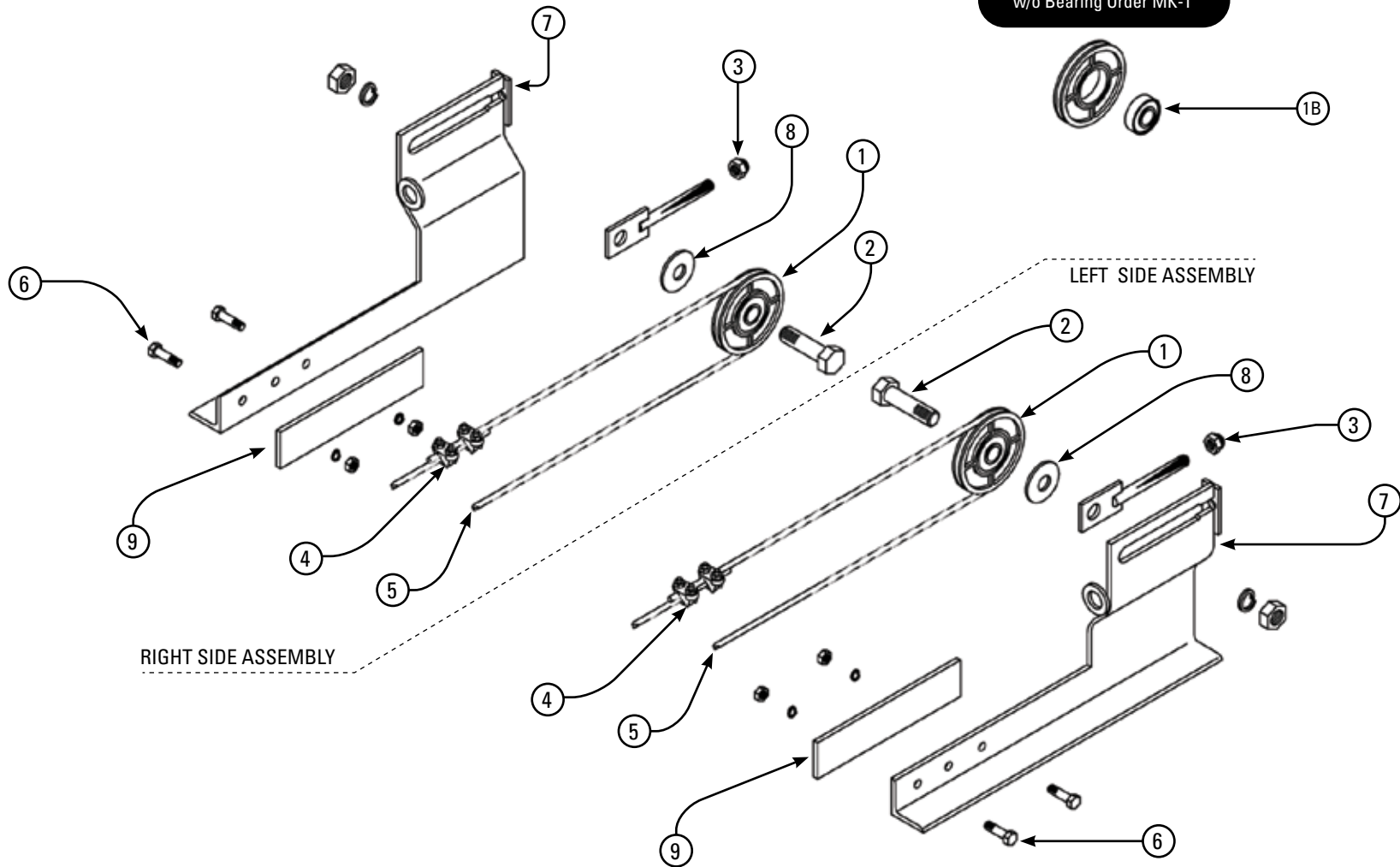
LEFT REAR PULLEY ASSEMBLY

MK	PART #	# REQ.		BILL OF MATERIAL / DESCRIPTION	LENGTH	
					FT.	IN.
---	ST-RPA100L	1		L.H. PULLEY ASSEMBLY - COMPLETE		
1	ST-RPA101	1		PULLEY WITH BEARING		
1A	ST-RPA101A		1	PULLEY - NO BEARING		
1B	ST-RPA101B		1	BEARING		
2	ST-RPA102	1		REAR PULLEY BOLT, WASHER, NUT		
3	ST-RPA103	1		SPANNER W/ LOCK NUT		
4	STS-RPA104	2		CABLE CLAMPS		
5	ST-RPA105G			GALVANIZED CABLE 1/4"		
5	ST-RPA105S			STAINLESS CABLE 1/4"		
6	ST-RPA106	3		BOLT, WASHER, NUT, ASSEMBLY		
7	ST-RPA108	1		LEFT REAR BRACKET		
8	ST-RPA109	1		WASHER SPACER		
9	---	1		1/2" SPACER PLATE		



Idler Pulley Assembly Extended Rear Bracket

Pulley NOT SOLD
w/o Bearing Order MK-1





Idler Pulley Assembly Extended Rear Bracket

RIGHT REAR EXTENDED PULLEY ASSEMBLY

MK	PART #	# REQ.	BILL OF MATERIAL / DESCRIPTION	LENGTH	
				FT.	IN.
---	ST-RPA100RE	1	R.H. EXTENDED PULLEY ASSEMBLY - COMPLETE		
1	ST-RPA101	1	PULLEY WITH BEARING		
1A	ST-RPA101A	1	PULLEY - NO BEARING		
1B	ST-RPA101B	1	BEARING		
2	ST-RPA102	1	REAR PULLEY BOLT, WASHER, NUT		
3	ST-RPA103	1	SPANNER W/ LOCK NUT		
4	STS-RPA104	2	CABLE CLAMPS		
5	ST-RPA105G		GALVANIZED CABLE 1/4"		
5	ST-RPA105S		STAINLESS CABLE 1/4"		
6	ST-RPA106	3	BOLT, WASHER, NUT, ASSEMBLY		
7	ST-RPA107E	1	EXTENDED RIGHT REAR BRACKET		
8	ST-RPA109	1	WASHER SPACER		
9	---	1	1/2" SPACER PLATE		

LEFT REAR EXTENDED PULLEY ASSEMBLY

MK	PART #	# REQ.	BILL OF MATERIAL / DESCRIPTION	LENGTH	
				FT.	IN.
---	ST-RPA100LE	1	L.H. EXTENDED PULLEY ASSEMBLY - COMPLETE		
1	ST-RPA101	1	PULLEY WITH BEARING		
1A	ST-RPA101A	1	PULLEY - NO BEARING		
1B	ST-RPA101B	1	BEARING		
2	ST-RPA102	1	REAR PULLEY BOLT, WASHER, NUT		
3	ST-RPA103	1	SPANNER W/ LOCK NUT		
4	STS-RPA104	2	CABLE CLAMPS		
5	ST-RPA105G		GALVANIZED CABLE 1/4"		
5	ST-RPA105S		STAINLESS CABLE 1/4"		
6	ST-RPA106	3	BOLT, WASHER, NUT, ASSEMBLY		
7	ST-RPA108E	1	EXTENDED LEFT REAR BRACKET		
8	ST-RPA109	1	WASHER SPACER		
9	---	1	1/2" SPACER PLATE		

REV. 07/29/24 WLH